

Your Future Is Our Priority

We are passionate about your future - from your education and wellbeing, to the world you live in. We are a college that strives to positively change people's lives and add value to our communities.

We pride ourselves on providing everyone with access to high-quality and innovative education and training in a friendly culture of mutual respect and support.

YOUR FUTURE, YOUR SGS

Information correct at time of printing. Visit www.sgscol.ac.uk for regularly updated course and College information.

SGS COLLEGE OPEN EVENTS



OCT 12TH '24

All Subjects Open Event

MAY 1ST '25

All Subjects Open Event

NOV 23RD '24

All Subjects Open Event



Register Online!

JAN 25TH '25

All Subjects Open Event

sgscol.ac.uk/events/open-events



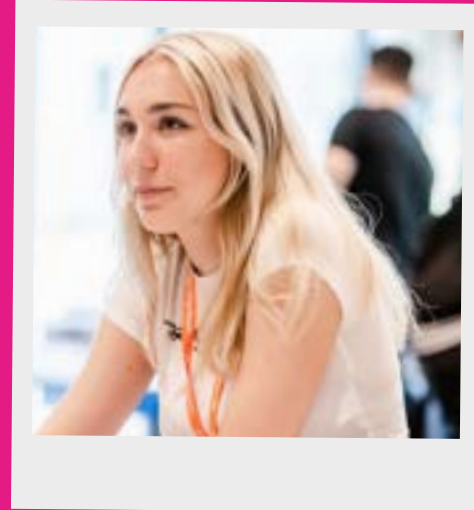
Student Support

Academic Support

The Academic Support team at SGS can help students with dyslexia, dyspraxia, asperger's syndrome and other learning difficulties.

We can provide specialist in-class support with literacy and numeracy, skills development sessions, testing and assessment for exam concessions and assistive technologies. We can also help you develop the study skills that you need to organise your coursework and plan assignments.

For more details on the academic support call 01453 761277 (Stroud Campus) or email info@sgscol.ac.uk



Additional Learning Support

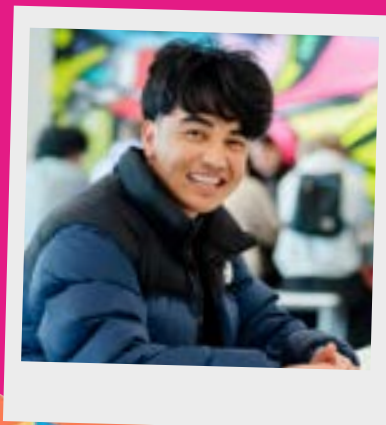
The Learning Support team work across all the sites and coordinate the support and review process for learners with EHCPs, MyPlans/ MyPlan+ and students who experience significant barriers to learning. We will coordinate your support package and ensure that it reflects the outcomes on your EHCP or MyPlan. As part of this, you may have access to support from outside agencies, specialist mentors, in-class support, support in unstructured times or medical/ physical support. The Learning Support team will advise your curriculum areas by making recommendations, organising training and facilitating reasonable adjustments.

In order to access support with our team, please ask your tutor to refer you. Alternatively, contact English & Maths Extra by email at: englishandmathsextra@sgscol.ac.uk



It's important that you let us know about your support needs before you get to College, otherwise we may not be able to get the right support in place for you to achieve your best.

You can get in touch with us using the contact details below. For more details on additional learning support call 01453 761224 or email learningsupport@sgscol.ac.uk



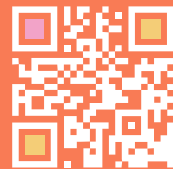
SGS Wellbeing Service

The SGS Wellbeing Service can help support you with your emotional, social, mental health and wellbeing. Our Education and Wellbeing Mentors can work with you to positively help your confidence and self-esteem and can help you deal with difficult emotions, stay healthy and make positive choices. They can also help you access help and support from external services. Whatever you are concerned about, you can talk to one of the team.

Financial Support

The Money Management Service team, (MMS), can provide you with information, advice and guidance on the financial support schemes that may be available to you if you are studying a further education course.

To find out more visit the MMS webpage www.sgscol.ac.uk/mms.



Safeguarding

We do our very best to make sure that all our learners feel safe, valued, respected and listened to.

We also make sure that all new and existing learners are made aware of what safeguarding is and how we can support them whilst at College. We are committed to promoting the wellbeing of all learners and protecting them from harm.

We fully recognise that it is the responsibility of all staff to ensure that learners are safe within the College environment and this includes: raising awareness of and applying a zero-tolerance approach to bullying; ensuring learners are safe on and around College campuses and paying due regard to our responsibilities in relation to health and safety, child protection issues and risks of radicalisation. If you or someone you know is at risk of harm or committing harm to others, please talk to your Wellbeing Mentor, Tutor or one of our Safeguarding Officers.



Course Specific Enrichment

As part of your study programme here at SGS College you will undertake 36 hours of course specific enrichment which is focused around extending beyond your academic qualifications. A key part of this is the holistic development of the students where individual course areas will use the SGSPlus+ framework to offer a range of activities, trips, visits and short courses to develop you as a person. Each individual course at SGS College does enrichment slightly differently, so be sure to take up as many of the opportunities as possible.

The Work Placement Team

All full-time learners (excluding T Level learners) will be expected to complete a minimum of 35 hours of work placement or work-related activity.

The work placement team at the College will support you in sourcing relevant work placements and will help you to develop the necessary skills to contact employers yourselves. They also have links with a wide range of employers which you will have access to. We aim to develop the skills you need to ensure that you have a bright future when leaving the College.

Stroud Campus

SGS Stroud Campus is situated in the beautiful Five Valleys. The campus is based in a modern purpose-built building with the latest education technology and computers in every classroom, offering interactive learning for all students.



View our campus!
VIRTUAL TOUR

Counselling

Sometimes a sympathetic ear from friends and family isn't enough and you may find you need impartial help and support at some point during your time at College. SGS offers a confidential counselling service delivered by trained and experienced counsellors for students who want to explore any problems they may have and to receive more in-depth support.



Transport

All of our campuses are easy to get to by public transport, car or bike. South Gloucestershire and Stroud College may be able to help you with travel expenses, depending on your financial circumstances.

To find out if you're eligible, contact our Money Management Service team on 01453 761185 Alternatively, you can email mms@sgscol.ac.uk or visit www.sgscol.ac.uk/mms



Course Levels & Qualifications at College

To understand the different educational levels at SGS please visit our handy Qualifications Explained page.

www.sgscol.ac.uk/qualifications-explained

College Website

To jump on to our website for more details on everything, please visit:

www.sgscol.ac.uk



Campuses

South Gloucestershire and Stroud College

S Stroud Campus (Registered Office)
Stratford Road, Stroud, Gloucestershire, GL5 4AH
T: 01453 763424 F: 01453 753543

F Filton Campus / SGS Sixth
Filton Avenue, Filton, Bristol, BS34 7AT
T: 0117 931 2121 F: 0117 931 2233

W WISE / Brunel Campus
New Road, Stoke Gifford, Bristol, BS34 8LP
T: 0117 919 2601 F: 0117 377 6828

Q Bristol Queens Road Campus
Queens Road, Bristol, BS8 1PX
T: 0117 973 6259 F: 0117 973 4125

B Berkeley Campus (UTC)
Gloucestershire Science and Technology Park, Berkeley Green, Gloucestershire, GL13 9FB
T: 01453 761240

H SGS Horizon
Unit E & F Horizon, 38 Taurus Road, Patchway, Filton, Bristol, BS34 6FE T: 0800 0567 253



HOW TO APPLY

1 FIND OUT WHICH COURSE IS RIGHT FOR YOU

- Look at the vocational, academic and apprenticeship options on our website or prospectus
- Talk to careers advisers, teachers, parents, apprenticeship experts, employers and friends
- Come to our Open Events – they're a great way to get a taste of the College.

2 COMPLETE YOUR APPLICATION FORM

- You can apply online - it's really easy and you will get an immediate acknowledgement email
- You can also download an application form at www.sgscol.ac.uk/digital-resources and send it by mail

3 RECEIVE A GUARANTEED CONDITIONAL OFFER OF A PLACE

We will offer you a conditional place on the subject area you select (the level at which you study will depend on your final GCSE or A Level results and for some subjects reviewing a portfolio of work or audition).

4 RESULTS DAY

Congratulations – on GCSE results day you can request a call from the department you applied to study with to confirm your place at SGS. If your grades are not what you expected, please do not worry. We will discuss options with you and ensure a suitable course is found.

5 ENROLMENT & INDUCTION

Welcome to SGS. All that is needed now is to complete your enrolment and then follow an induction programme to introduce you to College life. You are now part of our learning community at SGS. Good luck.

ANIMAL CARE & SCIENCE



- L1 Animal Care
- L2 Animal Care

APPRENTICESHIPS



- Accountancy
- Business Administration
- Customer Service
- Early Years
- Electrical
- Fire, Emergency & Security Systems
- Joinery
- Multi-Channel Marketing
- Plumbing and Domestic Heating
- Teaching Assistant



Apprenticeships offer the chance to earn while you learn. As an apprentice, you will be employed with the same entitlements as other employees. You will also follow a structured training programme to ensure you develop the skills, knowledge and behaviours required by employers for you to succeed in the workplace.



For current apprenticeship vacancies visit sgscol.ac.uk/apprenticeships/vacancies

ART & DESIGN



STROUD SCHOOL OF ART



- L1 Award & Diploma Art, Design & Photography
- L2 Award & Diploma Art, Design & Photography
- L3 Diploma & Extended Diploma Fine Art
- L3 Diploma & Extended Diploma Design & Communication
- L3 Diploma & Extended Diploma Photography, Film & Media
- L3 Diploma and Extended Diploma Make-up Artistry
- Foundation Diploma Art & Design
- Access to Higher Education Art & Design (Adult)



Stroud School of Art has been helping shape the creative nature of the region for over 160 years. SGS College is now the largest provider of vocational art in the South-West and is renowned for offering exceptional and inspiring courses in a range of areas within the art sector.

CONSTRUCTION



- Entry Vocational Studies Construction
- L1 Diploma Brick
- L2 Technical Brick
- L1 Construction Skills Carpentry
- L2 Technical Carpentry
- L1 Construction Skills Electrical
- L2 Technical Electrical
- L1 Construction Skills Plumbing
- L2 Technical Plumbing

Learners join our Construction Study Programmes at an appropriate skill level and on successful completion our learners will be ready to enter the industry, gain an apprenticeship or continue on to further study.

FORENSICS & CRIMINOLOGY



- L3 Extended Diploma Criminology



HEALTH & SOCIAL



- L2 Health & Social Care
- L3 T Level Health & Social Care

T-LEVELS AT SGS STROUD

T Levels (Technical Levels) are a new type of vocational qualification designed to bring classroom learning and an extended industry placement together to give young people a new two-year, full-time study programme equivalent to 3 A Levels.

T Levels are ideal if you have finished your GCSEs and want the knowledge and experience to get straight into employment, an apprenticeship or higher education.

T Levels give you the chance to learn what a real career is like while you continue your studies. You'll spend 80% of your time in the classroom and 20% on a 45-day placement with an employer to give you the skills and knowledge companies look for.

Visit our website for T Level course details www.sgscol.ac.uk

EMPLOYABILITY & PROGRESSION



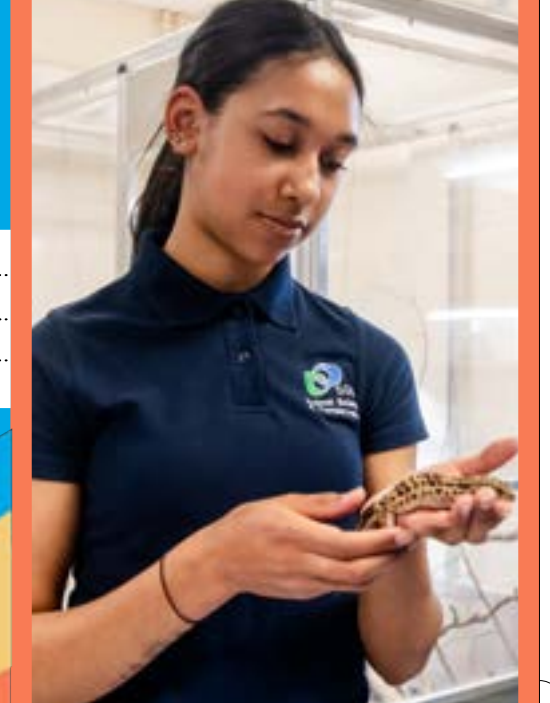
- E3 Aspire
- L1 Vocational Studies



FOUNDATION STUDIES



- Foundation Futures
- Foundation Vocational
- Foundation Employment
- Supported Internship



GAMES DESIGN



- L2 Award & Diploma Games Design
- L3 Diploma & Extended Diploma Games Design

GCSE



- GCSE PLUS Programme
- GCSE PLUS 14-16 Y1



MUSIC



- L2 Award & Diploma Music Performance and Production
- L3 Diploma & Extended Diploma Music Performance & Production

SGS CREATE

Create your own future

SGS Create, a specialised centre for 14-16-year-olds, welcomes ambitious young learners facing disengagement, anxiety, wellbeing concerns, neurodiversity, or those seeking alternative education options.

Housed at SGS College Stroud Campus, SGS Create fosters an inspiring and supportive learning environment. Our aspirational and flexible curriculum places learners' needs at the forefront, empowering them to acquire skills, qualifications, confidence, and resilience. They'll form friendships, develop social skills, creativity, and respect for society and the environment.

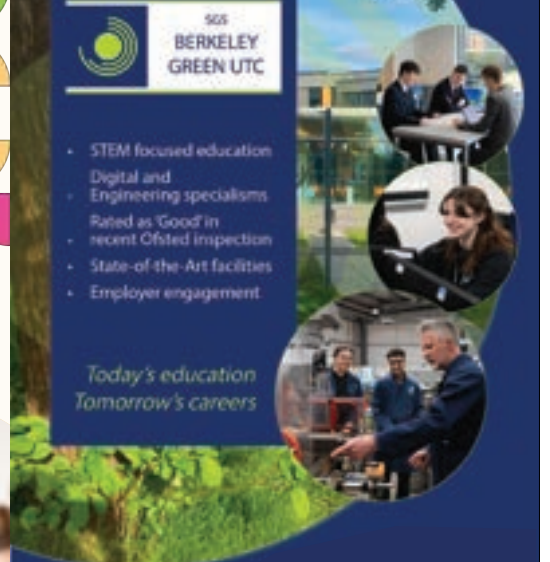
Find more details at www.create.sgscol.ac.uk

The curriculum includes 4 GCSEs (English Language, Maths & Double Award Science) and 4 vocational courses (Art & Design, Animal Care, Music and Games Design).

Alongside these subjects, we prioritise PSHE/RSE, PE lessons, mental health & wellbeing, and life skills. Applications open in October and close in April each academic year, with up to 100 places available for year 10 students.

JOIN OUR OPEN EVENTS

- Sat 12 Oct '24
- Sat 23 Nov '24
- Sat 25 Jan '25
- Thu 1 May '25



SGS BERKELEY GREEN UTC

- STEM focused education
- Digital and Engineering specialisms
- Rated as 'Good' in recent Ofsted inspection
- State-of-the-Art facilities
- Employer engagement

Today's education
Tomorrow's careers



For further information or to make an application visit www.berkeleygreenutc.org.uk

Patents and trademarks used under licence: EP2925530B1 © CARS 2card.co.uk No. 14150630