

Your future is our priority

We are passionate about your future - from your education and wellbeing, to the world you live in. We are a College that strives to positively change people's lives and add value to our communities. We pride ourselves on providing everyone with access to high-quality and innovative education and training in a friendly culture of mutual respect and support.

YOUR FUTURE, YOUR SGS

Campuses

South Gloucestershire and Stroud College

F **Filton Campus / SGS Sixth**
Filton Avenue, Filton, Bristol, BS34 7AT
T: 0117 931 2121 F: 0117 931 2233

S **Stroud Campus**
Stratford Road, Stroud, Gloucestershire, GL5 4AH
T: 01453 763424 F: 01453 753543

W **WISE / Brunel Campus**
New Road, Stoke Gifford, Bristol, BS34 8LP
T: 0117 919 2601 F: 0117 377 6828

Q **Bristol Queens Road Campus**
Queens Road, Bristol, BS8 1PX
T: 0117 973 6259 F: 0117 973 4125

B **Berkeley Campus (UTC)**
Gloucestershire Science and Technology Park,
Berkeley Green, Gloucestershire, GL13 9FB
T: 01453 761240

H **SGS Horizon**
Unit E & F Horizon, 38 Taurus Road, Patchway,
Filton, Bristol, BS34 6FE
T: 0800 0567 253

Information correct at time of printing.
Visit www.sgscol.ac.uk for regularly updated course and College information



A LEVEL OPTIONS AT SGS SIXTH



Level 3 Criminology

Study Criminology and learn about the different types of crime, the reasons why people commit crime and how influences and perceptions of crime change over time. This course is perfect if you have an interest in law, sociology and psychology.

Law

A Level Law is a contemporary and thought-provoking subject and will help you develop an understanding of the role of law in today's society and raise your awareness of the rights and responsibilities of individuals.



UAL Level 3 Subsidiary Diploma Art (Visual Arts)

This qualification, designed by the University of the Arts London, will introduce you to the breadth of specialisms within the visual arts and provide you with the opportunity to experiment and then specialise in your chosen pathway of fine art, graphics, fashion and textiles, photography or craft.

UAL Level 3 Subsidiary Diploma Photography

The UAL Level 3 Subsidiary Diploma in Visual Arts Photography gives you the opportunity to explore photography in a contemporary and progressive manner. You will learn to use the camera as a tool of documentation and expression supported by the technical aspects of camera techniques.



Biology

Biology is the science of life. Studying an A Level in Biology will give you the opportunity to explore biological phenomena from the smallest molecule to the largest ecosystem and investigate many fascinating topics such as genetic engineering, plant structure and biodiversity.



Chemistry

Chemistry is all around us, from the air that we breathe to the food we eat. Develop your scientific skills and knowledge of the world we live in, through research, problem solving and analysis gained from practical experiments and exploration of theories.

Physics

Physics is at the forefront of our understanding of how the world works and what makes the universe tick. You will develop analytical skills and learn about scientific concepts relevant to a wide range of employers from engineering and manufacturing, computer programming, the construction industries and medicine.



BTEC Level 3 Extended Diploma Biomedical Science (Applied)

If you are interested in the application of science in the biological or medical field, this could be the study programme for you. This qualification will explore key concepts across all three main sciences whilst developing practical experience in laboratory techniques.

BTEC Level 3 Extended Diploma Forensic Science (Applied)

This exciting programme is designed to give you a detailed understanding of aspects of science with an emphasis on the skills and knowledge used in the fields of analytical and forensic science. You will study a range of core scientific units as well as specialist units relating to forensics.



Extended Project Qualification (EPQ)

The EPQ qualification is offered to second year students in the Sixth Form. It is a challenging, yet rewarding, qualification that develops your research skills and prepares you to become more independent. Both these skills are needed for university and beyond. You will be responsible for setting your own research question, then through research, you will be supported to deliver a 5,000 word report or to create an artefact based on this question. EPQ can be taken in either year one or year two of your study programme. It is taken as a fourth subject choice.

English Language

Learn to analyse how the English language is structured and how it is tailored for different purposes including advertisements, social media, and journalism. Explore how we develop language from an early age and the social and biological factors that influence this.

English Literature

Embark on an enriching academic journey and examine the works of English-speaking authors, poets and playwrights. A Level English Literature will help you develop your analysis and argument of prose, poetry and plays to further deepen your knowledge of the literature field.

English Language and Literature

Begin an enriching journey that explores the dynamic intersection of language and literature. This programme offers a comprehensive exploration of literary works and non-fiction texts and will also enable you to develop your creativity and expertise by producing your own original writing.

Study Programmes

Our study programmes in the Sixth Form set you up for your next steps and make you stand out as an individual. You will combine your subject choices alongside our highly regarded Sixth Form Academies (Subject, Skills, Aspire or Sports).

You will also have a dedicated pastoral mentor to help you keep on track with your studies and obtain an industry placement in the field that you want to go onto do further study or have a career in.



Film

By studying film, you will develop your critical thinking and enrich your understanding of a wide range of genres. You will learn how films are bound to their social, cultural and historical contexts and how filmmakers from a range of backgrounds represent these features.

Media

A Level Media is a combination of theory, analysis and practical skills. You will undertake a critical analysis of a wide range of different media and by applying theory, you will gain a deeper understanding of how media products change over time and shape audience responses.



Business

Develop your critical analysis, decision-making and problem-solving skills with an A Level in Business. You will gain transferable knowledge and skills across a range of business and management fields, as well as expanding your personal decision-making, planning and financial expertise.

Economics

Economics is a highly valuable, academic subject for those who have an interest in what's happening in the world around them. You will explore economic theories and principles to explain problems that society faces including unemployment, lack of funding for public services and inflation variability.



Psychology

Psychology is the scientific study of the mind and human behaviour, relating to why people think in certain ways, how experiences affect you and how groups and individuals behave. You will look at different areas of psychological research and explore theories through laboratory experiments, interviews and field observations.

Sociology

Sociology examines social behaviour from a variety of perspectives: how it originates and then develops and the way people are organised into groups according to class, gender and race. This is suitable for anyone pursuing a career in law, journalism, teaching and wider social roles.

HOW TO APPLY

1 FIND OUT WHICH COURSE IS RIGHT FOR YOU

- Look at the vocational, academic and apprenticeship options on our website or prospectus
- Talk to careers advisers, teachers, parents, apprenticeship experts, employers and friends
- Come to our Open Events – they're a great way to get a taste of the College.

2 COMPLETE YOUR APPLICATION FORM

- You can apply online - it's really easy and you will get an immediate acknowledgement email
- You can also download an application form at www.sgscol.ac.uk/digital-resources and send it by mail

3 RECEIVE A GUARANTEED CONDITIONAL OFFER OF A PLACE

We will offer you a conditional place on the subject area you select (the level at which you study will depend on your final GCSE or A Level results and for some subjects reviewing a portfolio of work or audition).

4 RESULTS DAY

Congratulations – on GCSE results day you can request a call from the department you applied to study with to confirm your place at SGS. If your grades are not what you expected, please do not worry. We will discuss options with you and ensure a suitable course is found.

5 ENROLMENT & INDUCTION

Welcome to SGS. All that is needed now is to complete your enrolment and then follow an induction programme to introduce you to College life. You are now part of our learning community at SGS. Good luck.

SGS COLLEGE OPEN EVENTS

- | | | | |
|---------------------|------------------------------|---------------------|-------------------------|
| SEP 26TH '24 | SGS Sixth A Level Open Event | JAN 25TH '25 | All Subjects Open Event |
| OCT 12TH '24 | All Subjects Open Event | MAY 1ST '25 | All Subjects Open Event |
| NOV 23RD '24 | All Subjects Open Event | | Register Online! |

sgscol.ac.uk/events/open-events



Academies

Our Sixth Form Academies give you amazing additional experiences. Choose from either a Subject Academy, where you can further specialise in the subjects you are studying; a Skills Academy, where you can learn a new skill or develop an existing one, these include learning British Sign Language, First Aid or how to pass your driving test; our Aspire Academies if you are wanting to make yourself stand out with either the Duke of Edinburgh's Award, additional qualifications or critical thinking or through one of SGS College's highly regarded Sports Academies.

Check out our list of current opportunities at www.sixth.sgscol.ac.uk



Geography

Develop a sound understanding and knowledge of geographical issues, examining the interaction of people and their environments through detailed case studies. You will gain graphical, cartographic, statistical and ICT skills along with learning how to construct extended written arguments about geographical matters.

History

Develop your critical thinking and analytical research skills as you examine the significance of historical events, the role of individuals in history and the nature of change over time. You will gain a deeper understanding of the past through political, social, economic and cultural perspectives.

Maths

Mathematics is an interesting and challenging A Level that will enable you to study a wide range of topics across pure and applied maths. You will expand your understanding of topics covered at GCSE and will develop your ability to problem solve and think strategically.

Core Maths

Core Maths is a one-year qualification which develops your mathematical skills beyond GCSE. It is highly recommended for those undertaking subjects which contain a mathematical element such as Business, Economics, Geography, Psychology, Physical Education or the Sciences. **This subject is taken as a fourth subject choice.**

Further Maths

Further Mathematics develops and extends a set of transferable skills. You will study some pure maths modules, which may include many new topics such as complex/imaginary numbers, matrices, differential equations and polar coordinates. **This subject is taken as a fourth subject choice.**



Religion, Philosophy and Ethics

Philosophy, Ethics and Religion is a thought-provoking course. You will be required to investigate controversial areas of ethics, enter into philosophical discussion and discover religious ideas of the 21st century.

Politics

Politics is a great subject for those with curious minds and a desire to find out what is going on in the world today. As well as covering news and current affairs, you will also explore key political ideology including liberalism, conservatism, socialism and feminism.



Physical Education

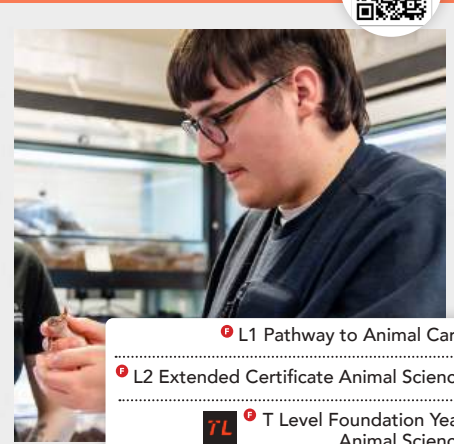
Immerse yourself in sport and performance analysis, whilst expanding on your knowledge of key bodily systems. Careers within the sports industry are wide ranging and this A Level will enable you to demonstrate your passion for the subject to both higher education institutions and prospective employers.

Visit our website for further details and be a part of Bristol's fastest growing Sixth Form



WWW.SIXTH.SGSCOL.AC.UK

ANIMAL CARE & SCIENCE



- L1 Pathway to Animal Care
- L2 Extended Certificate Animal Science
- T Level Foundation Year Animal Science
- L2 Diploma Animal Science
- L3 T Level Animal Management

APPRENTICESHIPS



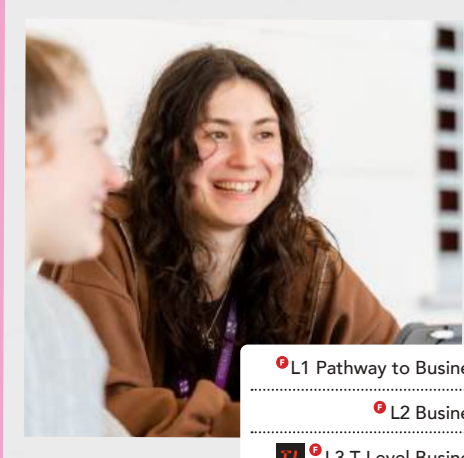
- | | |
|------------------------------------|-----------------------------|
| Accountancy | Human Resources |
| Bricklaying | IT and Software Development |
| Business Administration | Management |
| Carpentry | Multi-Channel Marketer |
| Community Activator Coach | Painting & Decorating |
| Construction Support Technician | Plastering |
| Customer Service | Plumbing & Domestic Heating |
| Early Years | Procurement and Supply |
| Electrical | Project Management |
| Facilities Management | Property Maintenance |
| Fire, Emergency & Security Systems | Sports Coach |
| Fitness Instructor | Teaching Assistant |
| Gas Engineering | Trade Supplier |
| Groundworker | Wall and Floor Tiling |

ART & DESIGN



- UAL L1 Diploma Art & Design
- UAL L2 Diploma Art & Design
- UAL L3 Diploma Creative Practices
- UAL Foundation Diploma Art

BUSINESS



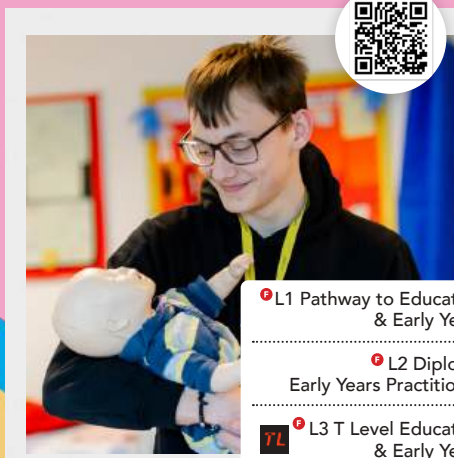
- L1 Pathway to Business
- L2 Business
- L3 T Level Business

CONSTRUCTION



- L1 Award Construction Skills
- L1 Diploma Construction Skills
- L1 Diploma Brick
- L1 Diploma Plastering
- L1 Diploma Painting and Decorating
- L1 Diploma Plumbing
- L1 Diploma Carpentry
- L1 Diploma Electrical
- L2 Diploma Brick
- L2 Diploma Plastering
- L2 Diploma Painting and Decorating
- L2 Diploma Plumbing
- L2 Diploma Carpentry
- L2 Diploma Electrical

EDUCATION & EARLY YEARS



- L1 Pathway to Education & Early Years
- L2 Diploma Early Years Practitioner
- L3 T Level Education & Early Years

EMPLOYABILITY & PROGRESSION

Pathway to Vocational Studies



STUDENT SUPPORT

Our dedicated and experienced staff are here to help you make the most of your academic and personal life at SGS College.

Visit [sgscol.ac.uk/learning-support](https://www.sgscol.ac.uk/learning-support) to find out more about

- Support with English & Maths
- Academic Support
- Additional Learning Support
- Safeguarding
- SGS Wellbeing Team
- Togetherall
- Money Management (MMS)



FOUNDATION STUDIES



- FOUNDATION FUTURES**
- FOUNDATION VOCATIONAL**
- General
 - Catering
 - Horticulture with Construction
 - Creative Media
 - L2 Access to Education
- FOUNDATION FOR EMPLOYMENT**
- Pre-Supported Internship
 - Supported Internship

GAMES DESIGN



- L2 Diploma Games Design
- L3 Diploma Games Design

DIGITAL IT



- L1 Pathway to Digital IT
- L2 T Level Foundation Digital IT
- L3 T Level Digital IT

GCSE



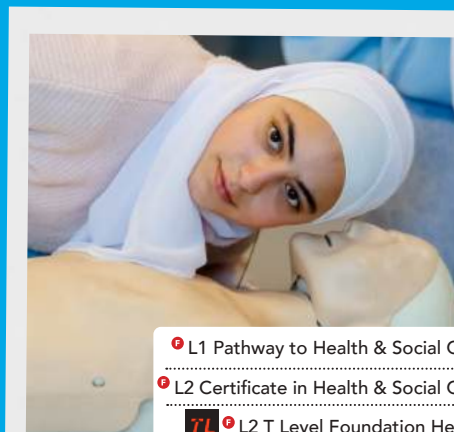
- Combined Science
- English Language
- English Literature
- Film Studies
- Maths
- Higher Maths
- Sociology

HAIRDRESSING & BEAUTY



- L1 Vocational Studies Hair & Beauty
- L2 Hair
- L2 Beauty
- L3 Hair
- L3 Beauty

HEALTH & SOCIAL CARE



- L1 Pathway to Health & Social Care
- L2 Certificate in Health & Social Care
- L2 T Level Foundation Health
- L3 T Level Health

HOSPITALITY & TRAVEL



- L2 First Certificate Travel & Tourism
- L2 Certificate in Aviation & Cabin Crew
- L3 Foundation Diploma Travel & Tourism



- STEM focused education
- Digital and Engineering specialisms
- Rated as 'Good' in recent Ofsted inspection
- State-of-the-Art facilities
- Employer engagement

Today's education Tomorrow's careers

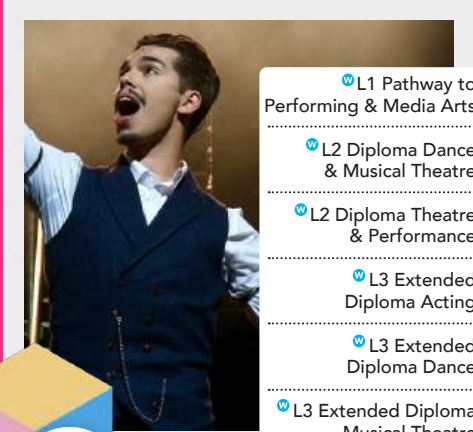
For further information or to make an application visit www.berkeleygreenutc.org.uk

MEDIA



- L1 Art, Design and Media
- L2 Creative Media
- L3 Diploma Animation
- L3 Diploma Film and TV
- L3 Diploma Sports Media

PERFORMING ARTS



- L1 Pathway to Performing & Media Arts
- L2 Diploma Dance & Musical Theatre
- L2 Diploma Theatre & Performance
- L3 Extended Diploma Acting
- L3 Extended Diploma Dance
- L3 Extended Diploma Musical Theatre
- L3 Extended Diploma Technical Theatre

PUBLIC SERVICES



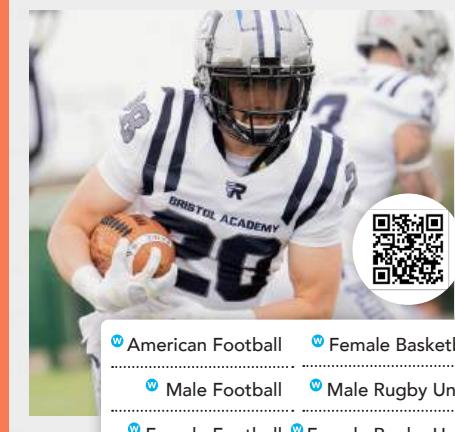
- L2 Diploma in Uniformed Public Services
- L3 Diploma in Uniformed Public Services (with GCSE retake)
- L3 Extended Diploma in Uniformed Public Services

SGS SPORT



- L1 & L2 Diploma in Esports
- L1 Diploma in Sport
- L2 Diploma in Leading Sport & Fitness Activities
- L2 Diploma in Sports Coaching
- L3 Diploma in Sports Studies (with GCSE Retake)
- L3 Diploma or Extended Diploma in Esports
- L3 Extended Diploma in Sport & Exercise Science
- L3 Extended Diploma in Sport & Fitness
- L3 Extended Diploma in Sports Coaching
- L3 Extended Diploma in Sports Studies
- Online L3 Diploma in Sports Coaching & Cycling Performance

SGS SPORT ACADEMIES



- American Football
- Female Basketball
- Male Football
- Male Rugby Union
- Female Football
- Female Rugby Union
- Netball
- Cycling
- Male Basketball
- Boxing

ACCESS TO HIGHER EDUCATION



- Access to Art & Design
- Access to Engineering
- Access to Health & Social Care
- Access to Humanities
- Access to Media Make-up & Hair Design
- Access to Medicine
- Access to Science

Please be aware that due to a recent announcement by the department for education, the list of available courses for the academic year starting in September 2025 may not be finalised until December 2024. This follows a government review of qualifications, including BTEC's and other applied general qualifications. As a result, some courses currently listed may be subject to change or removal.

You can still apply for the courses you are interested in. However, please note that some qualifications under review may not be available next year. We advise prospective students and their families to regularly check our website for updates. We will provide further information as soon as the review is complete and the course offerings for 2025 and beyond are confirmed.

We understand this uncertainty may be disruptive and appreciate your patience and understanding during this period of review.

Course Levels & Qualifications at College

To understand the different educational levels at SGS please visit our handy Qualifications Explained page.

www.sgscol.ac.uk/qualifications-explained

College Website

To jump on to our website for more details on everything, please visit:

www.sgscol.ac.uk

